

TECHNICAL DATA

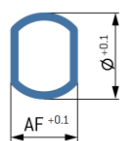
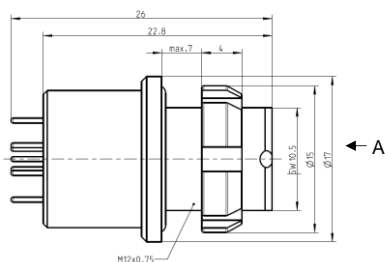
ODU MINI-SNAP[®]

PART NUMBER

G81L0Q-PD8QC00-00V0

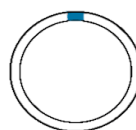
Type of connector	Receptacle for rear panel installation
Orientation	Straight
Number of contacts	8
Contact type	Socket
Termination of contact	Print
Contact diameter	0.5 mm
Termination diameter	0.5 mm
Nominal current (single contact / insert)	3.8 / 2.4 A
Nominal voltage acc. to IEC 60664	32 V AC
Mechanical coding	0°

DIMENSIONS

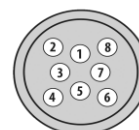


AF: 10.6 mm
Ø: 12.1 mm

Coding: 0°



Positions: 8



(A)

TECHNICAL INFORMATION

ENVIRONMENTAL

Degree of protection	IP 50 in mated condition ¹ IP 68 in unmated condition
He leakage rate	< 1 x 10 ⁻⁸ mbar l/s (tested at < 10 ⁻⁹ mbar l/s) acc. to DIN EN 60512-14-2:2006
Operating temperature range	-20°C to +120°C
Mating cycles	5000
Durability	Autoclavable (500 autoclaving cycles, according to DIN EN 13060;2015)

MATERIAL DESIGNATION

Housing material / surface	Aluminum / chrome-plated
Plating material (contact)	Au
Sealing	FKM
Insulator Material	Glass, PEEK

CHOOSE MATING PLUG

S11L0C-PD8MCD0-__00
S21L0C-PD8MCD0-__0S
W11L0C-PD8MCD0-__00²
W21L0C-PD8MCD0-__0S²
A11L0C-PD8MCD0-__00²
A21L0C-PD8MCD0-__0S²

¹ IP50: With proper ODU MINI-SNAP Push-Pull and Break Away Plugs

² Support of Ethernet [CAT 5] depends on the respective application. For further information please contact zentral@odu.de

Demand of special surface roughness and special pin layout, more information up on request

TECHNICAL DATA

ODU MINI-SNAP[®]

PART NUMBER:

G81L0Q-PD8QC00-00V0

Number of contacts		Contact type	He leakage rate according to DIN EN 60512-1-4-2-2006	Insulator material	Data transfer protocol	Data transfer rate	Nominal current (single contact / insert)	Nominal voltage acc. to IEC 60664
0	8	socket	$1 < 10^{-8}$ mbar l/s	glass + PEEK	Ethernet [CAT 5]	1 Gbit/s	3.8 / 2.4 A	32 V AC